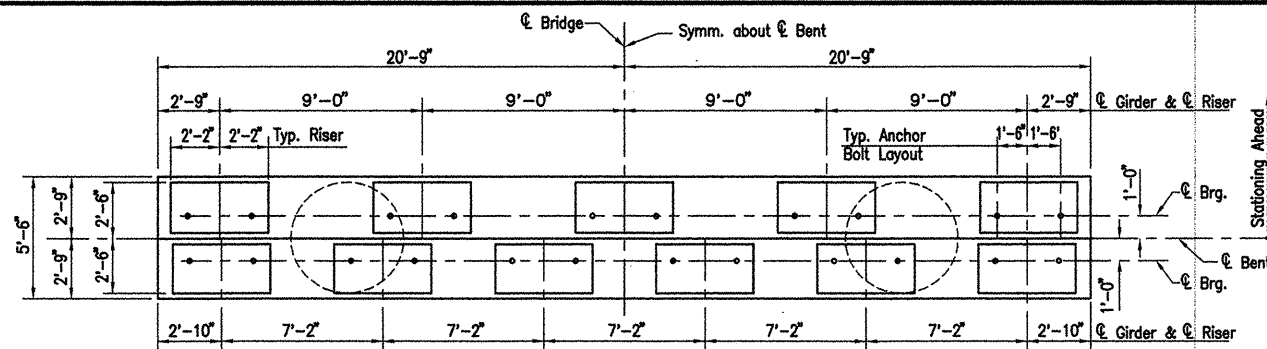
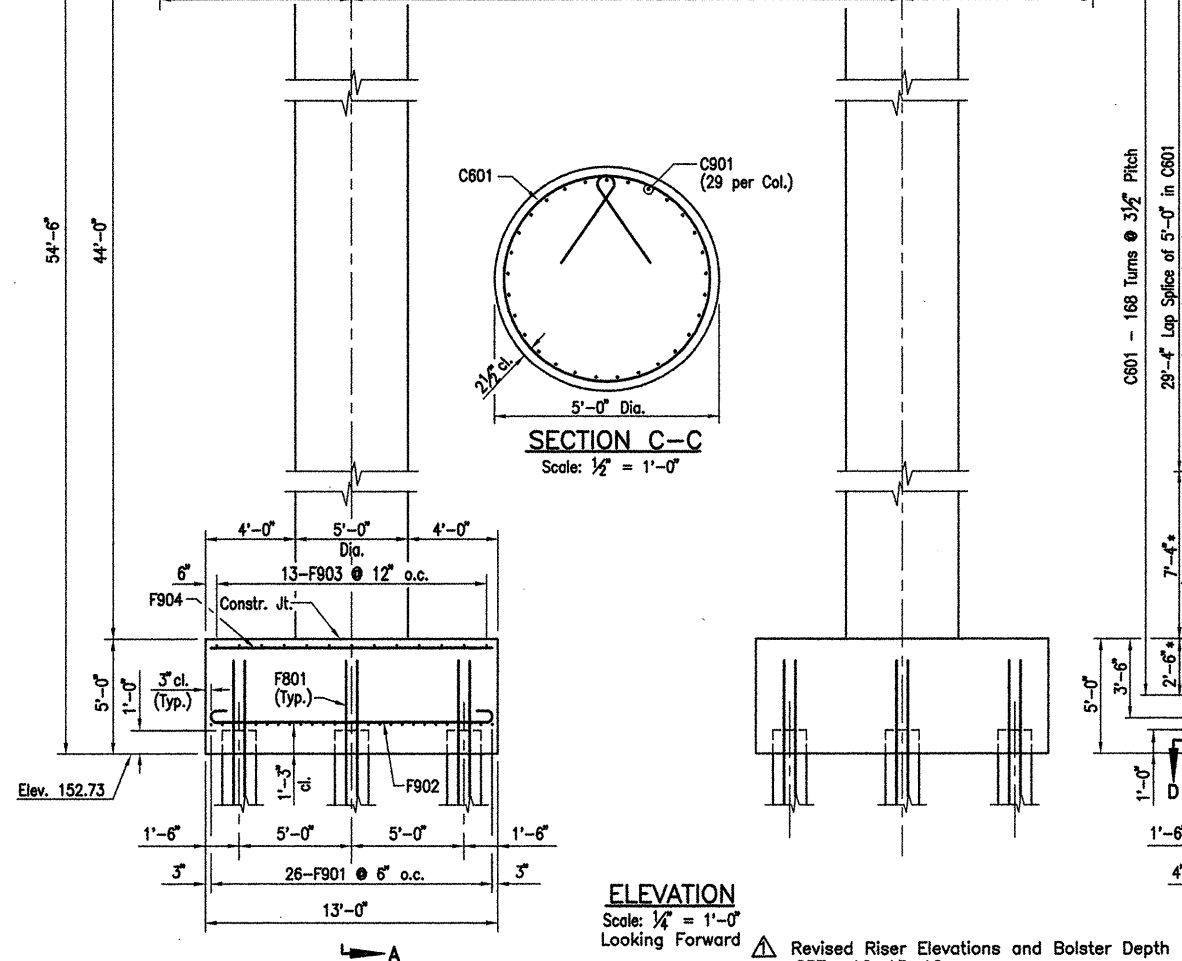
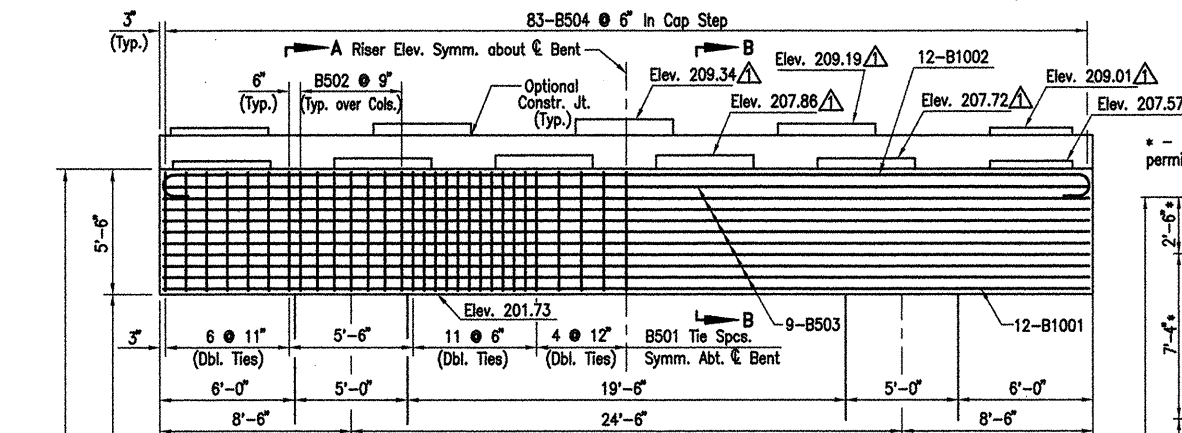


COMPANY\1999 JOBS\99-044 AHTD\WHITERIVER\JOB 110394\dtbmt89a1t1 ACAD SCALE: 1/4" = 1'-0"



PLAN  
Scale: 1/4" = 1'-0"

Note:  
For details of Elastomeric Bearings,  
see Dwg. No. 42012

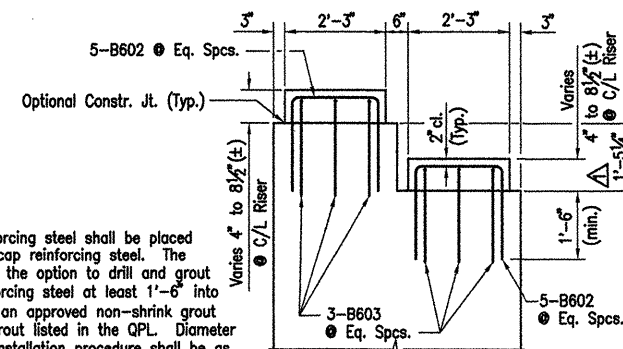


ELEVATION

Scale: 1/4" = 1'-0"

Revised Riser Elevations and Bolster Depth by HJE/MM  
GPT- 10-15-10

The riser reinforcing steel shall be placed with the bent cap reinforcing steel. The Contractor has the option to drill and grout the riser reinforcing steel at least 1'-6" into the cap using an approved non-shrink grout or an epoxy grout listed in the QPL. Diameter of holes and installation procedure shall be as recommended by the grout manufacturer. Place bent reinforcing properly to avoid damage. This work shall be paid under "Reinforcing Steel - Bridge".



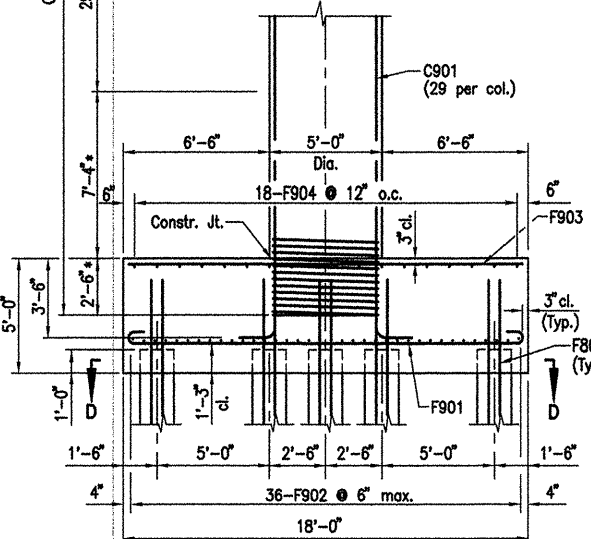
RISER DETAIL

Scale: 1/2" = 1'-0"

NOTES FOR SPIRAL REINFORCING

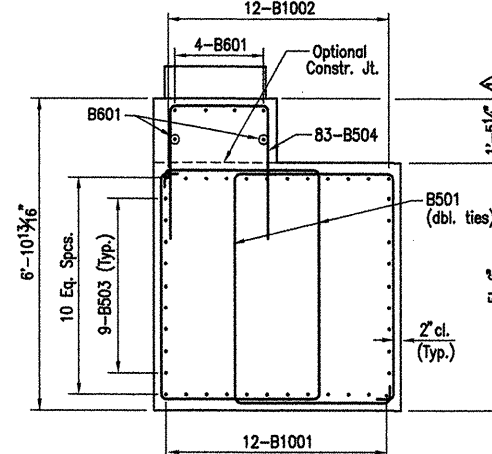
- Ends of spirals in footing and cap shall have 1 1/2 turns and terminate with a 135° hook and a 24" tail as shown in Bar List.
- Spiral reinforcement at splices of bars in the length designated as permissible for lap splices shall be terminated by a 135° hook with a 10" tail hooked around a vertical bar.
- Spiral reinforcement shall be plain round or deformed steel bars meeting the requirements of AASHTO M31 or M53 (Grade 60) or shall be cold drawn wire meeting the requirements of AASHTO M32 or M225 (Grade 70) with a minimum diameter of 0.75".
- Spiral reinforcement shall be paid for at the contract unit price bid per pound for "Reinforcing Steel - Bridge (Grade 60)". No additional payment shall be made for spacers, splices or bracing needed for assembly, shipping, handling or erecting.
- Lapped splices in spirals shall be lapped 80 bar diameters minimum.
- Adjust spiral pitch as needed to accommodate footing or cap bars.

C601 - 168 Turns @ 3 1/2" Pitch  
29'-4" Lap Splice of 5'-0" in C601 is permitted in this zone



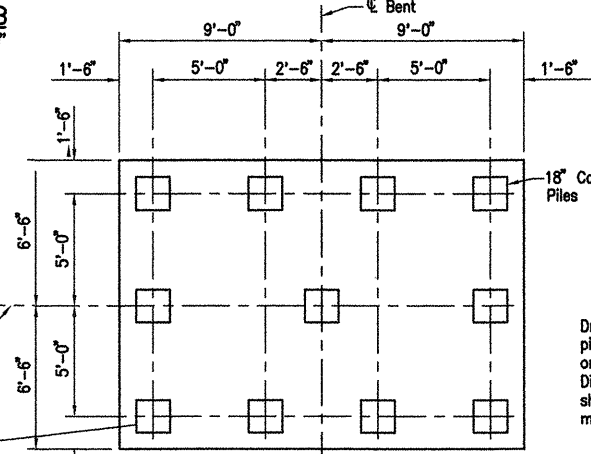
SECTION A-A

Scale: 1/4" = 1'-0"



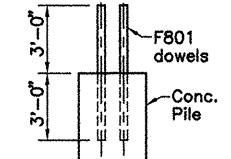
SECTION B-B

Scale: 1/2" = 1'-0"



SECTION D-D

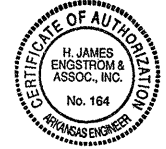
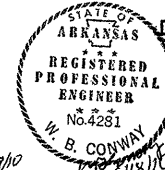
Scale: 1/4" = 1'-0"



SECTION E-E

N.T.S.

Drill and grout F801 dowels 3'-0" into piles using an approved non-shrink grout or an epoxy grout listed on the QPL. Diameter of holes and installation procedure shall be as recommended by the grout manufacturer.



ALTERNATE NO. 1

DETAILS OF BENT - WHITE RIVER  
BENT 89

WHITE RIVER STR. & APPRS.  
(CLARENDON) (PH II) (F)  
MONROE COUNTY

ROUTE 79 SEC. 13

ARKANSAS STATE HIGHWAY COMMISSION  
LITTLE ROCK, ARK.

Engstrom & Modjeski and Masters, Inc.

Apr. 10  
DRAWN BY: CJA DATE: Nov. 07 FILENAME: b1103941\_b07  
CHECKED BY: FS DATE: Nov. 01  
DESIGNED BY: BMH DATE: Nov. 01  
BRIDGE NO. 06830 DRAWING NO. 41970